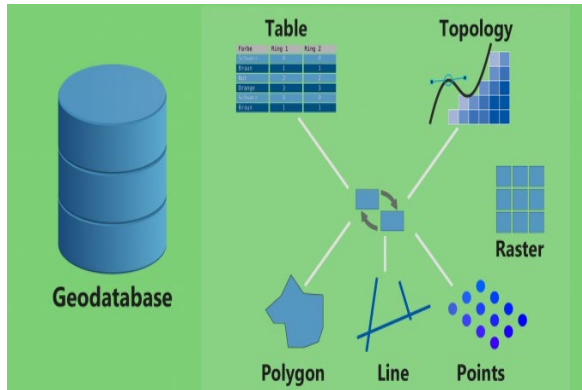


# Geography 517: Geodatabase Design

(Geographic Information Management and Processing)

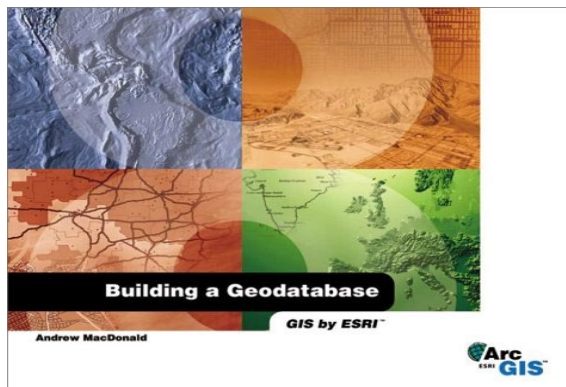
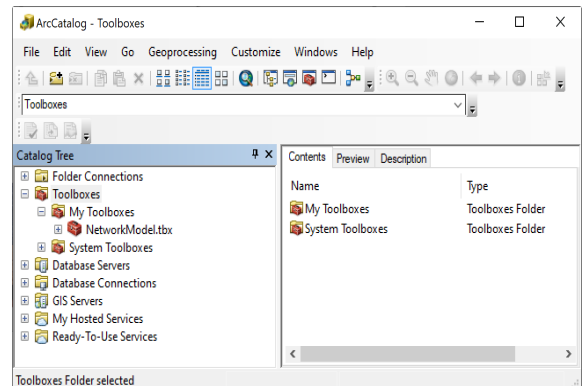
Spring Semester 2020, 5:10 – 7:50 PM on Thursdays

Dr. Shih-Lung Shaw, Department of Geography, UTK



- Do you need to create your own databases in ArcGIS?
- Do you know how to use ArcCatalog in ArcGIS to create geodatabases?

- Do you know the geodatabase model supports an object-oriented data model, which can represent entities as objects with properties, behavior, and relationships?



- Come to learn how to use ArcCatalog to create your own geodatabases such that you can use ArcMap and other ArcGIS tools to create maps and perform analyses with your own data!

Contact Dr. Shih-Lung Shaw at [sshaw@utk.edu](mailto:sshaw@utk.edu) for additional information.